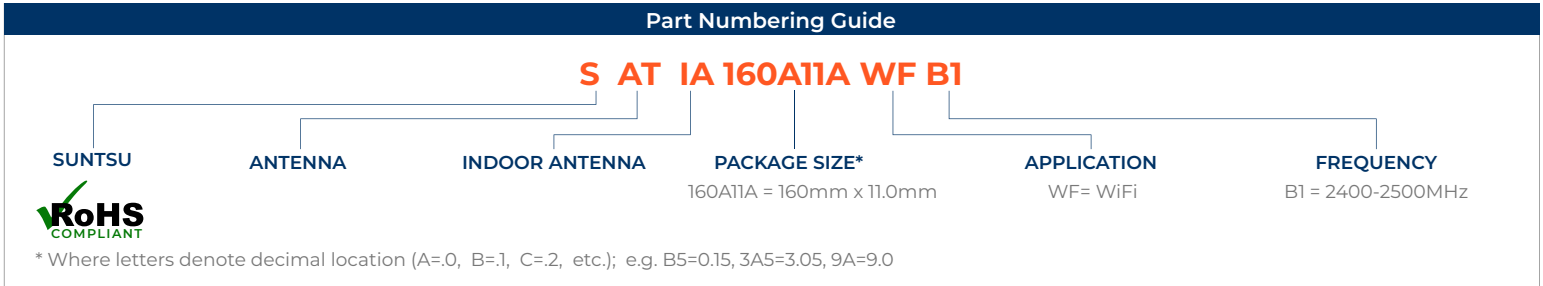
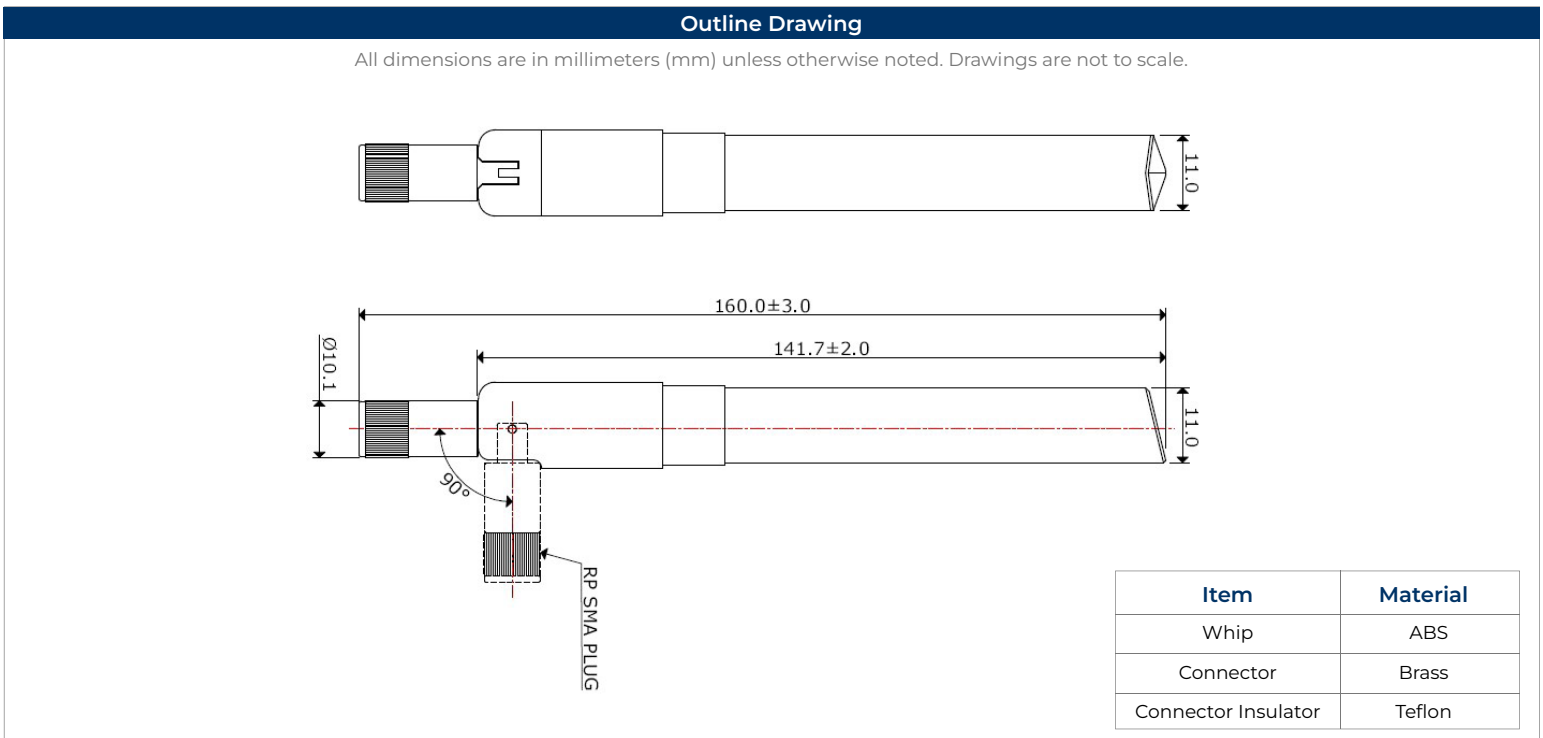


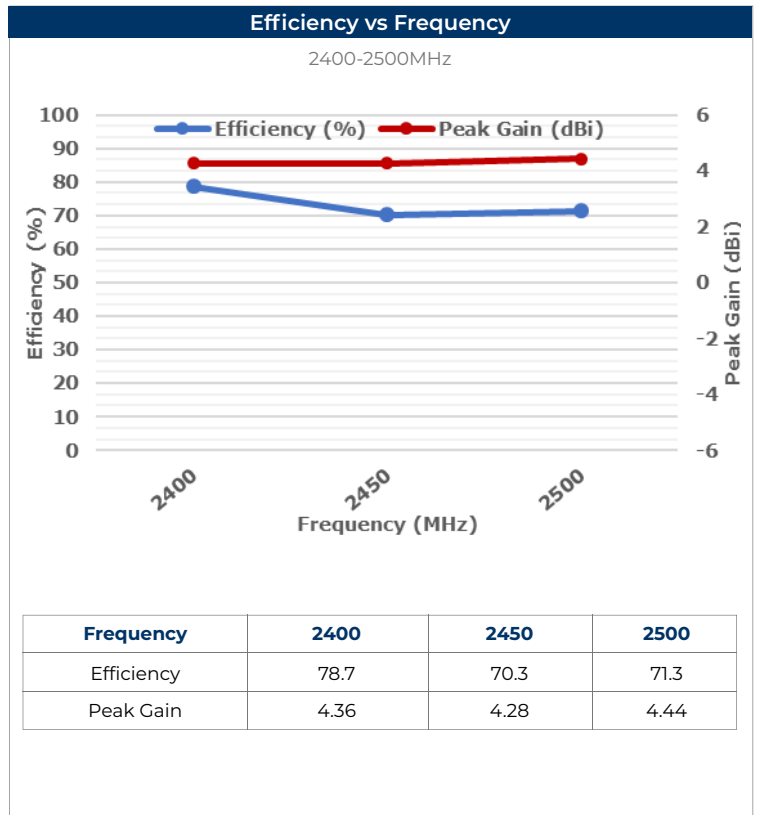
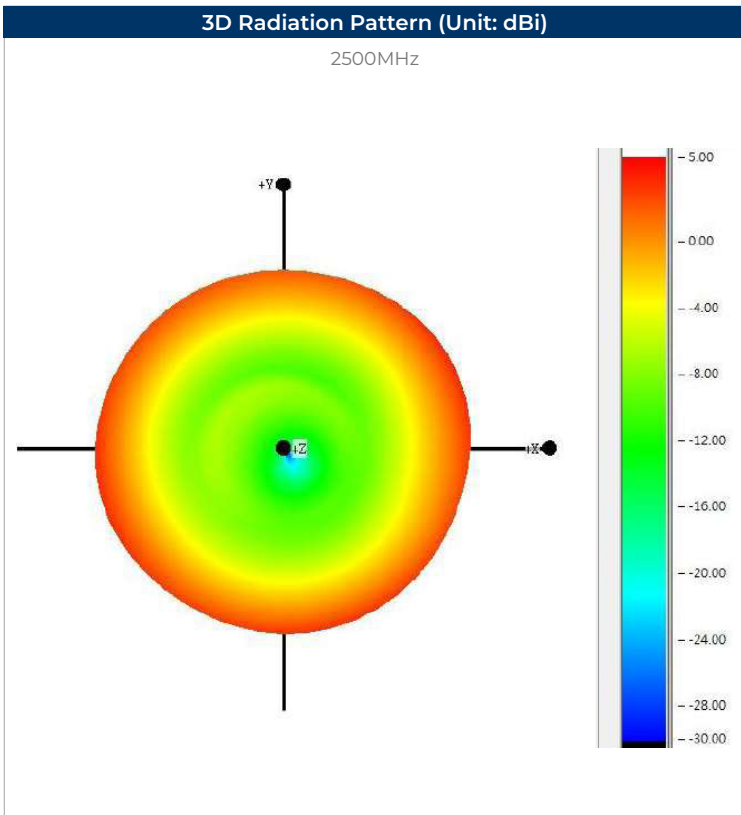
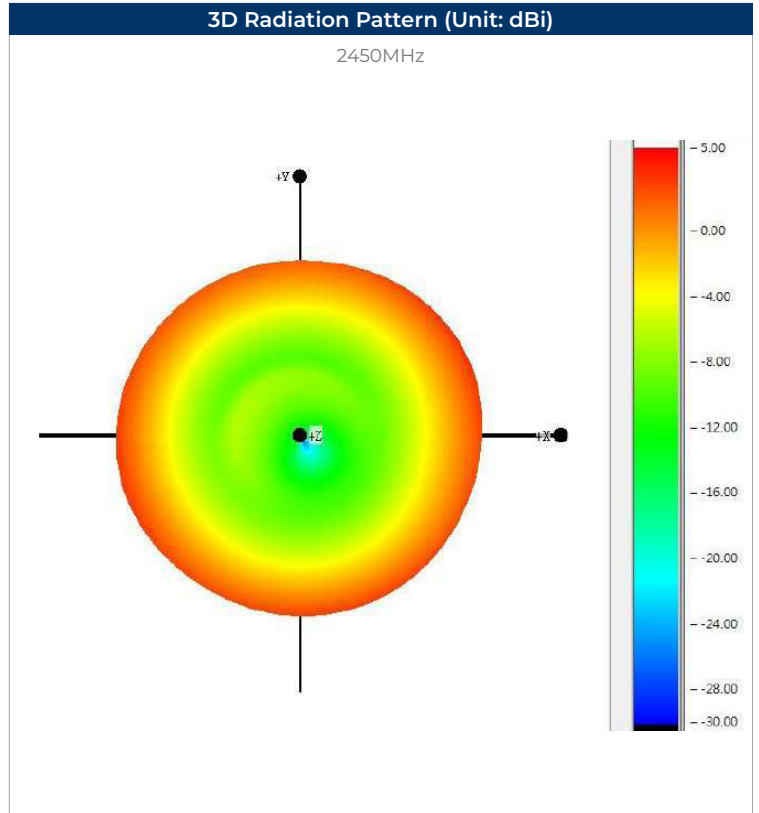
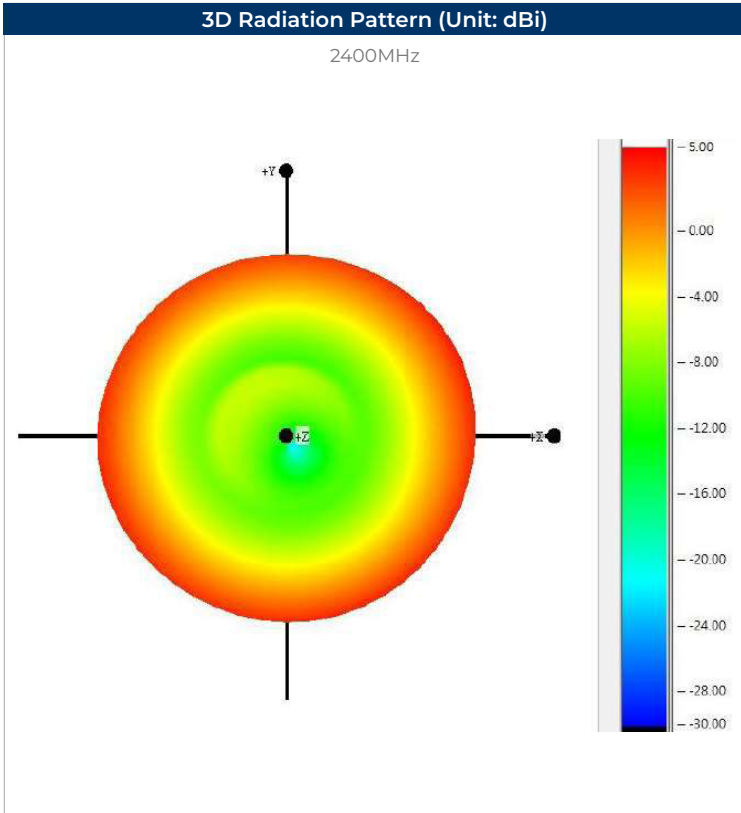
Features
<ul style="list-style-type: none"> WiFi / Bluetooth Indoor Antenna 50 Ohm Impedance 2400-2500MHz Omni Radiation

Applications
<ul style="list-style-type: none"> Bluetooth & IEEE 802.11a/b/g Wireless Communication Portable Device Machine To Machine Communication Network Devices



Electrical Parameters	Units	Minimum	Typical	Maximum	Remarks
Frequency Band	MHz	2400		2500	
Impedance	Ω		50		
Polarization			Vertical		
Peak Gain	dBi		4.3		At 2450MHz
Efficiency	%		70		At 2450MHz
VSWR				2	At Center Frequency
Operating Temperature	C	-20		65	

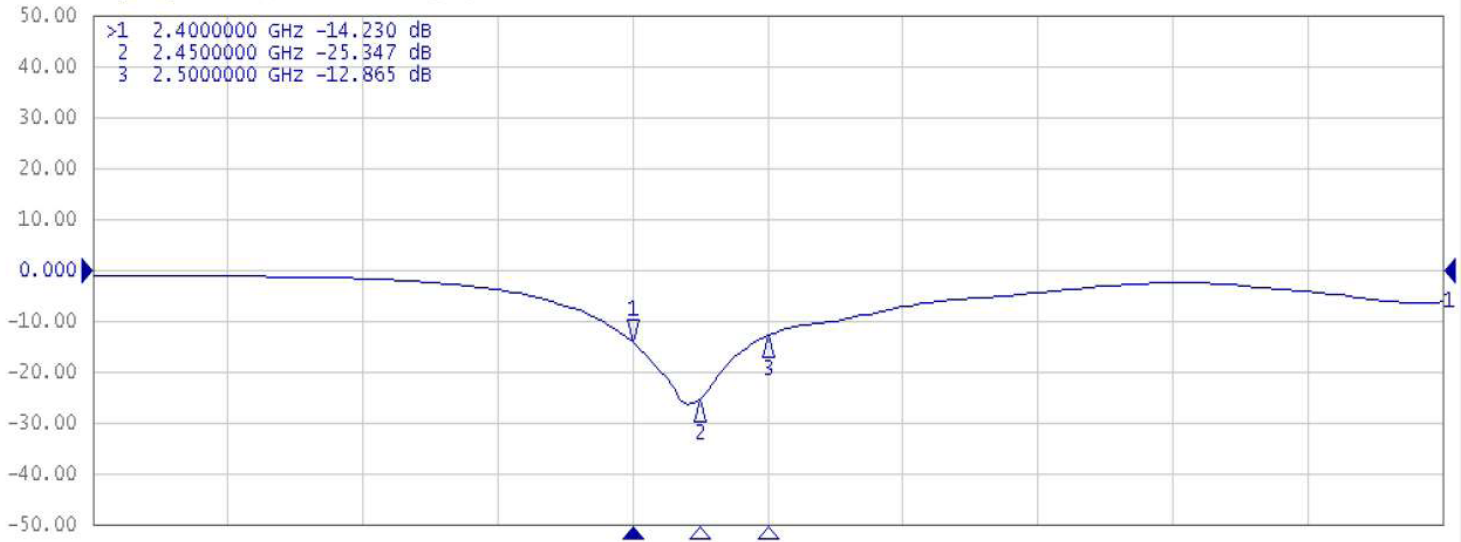




Electrical Test

Return Loss

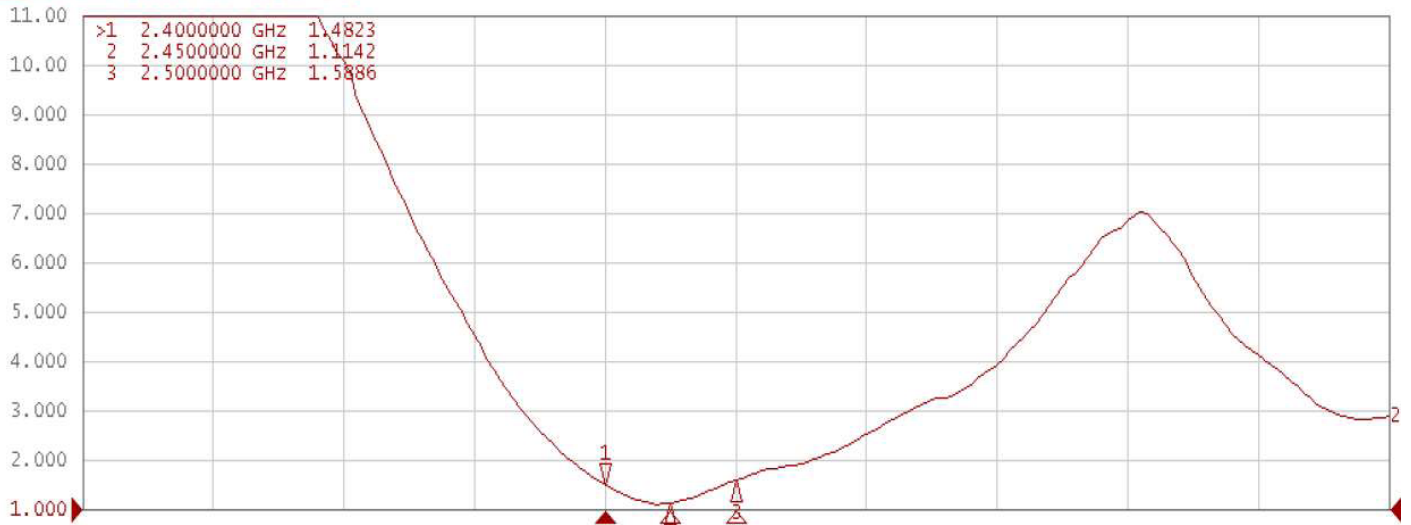
Tr1 S11 Log Mag 10.00dB/ Ref 0.000dB [F2]



Electrical Test

VSWR

Tr2 S11 SWR 1.000/ Ref 1.000 [F2]



Environmental & Mechanical Specifications

High Temperature Test	70°C for 48 hours, and then to normal temperature/humidity High Temperature Test for 24hours.
Low Temperature Test	-20°C for 48 hours, and then to normal temperature/humidity for 24hours.
Humidity Test	65°C / 90%RH for 48 hours, and then to normal temperature/humidity for 24hours.
Thermal Shock Test	-20°C for 30 min and +70°C for 30 min. 48 cycles, then expose to normal temperature/humidity for 24 hours or more.