

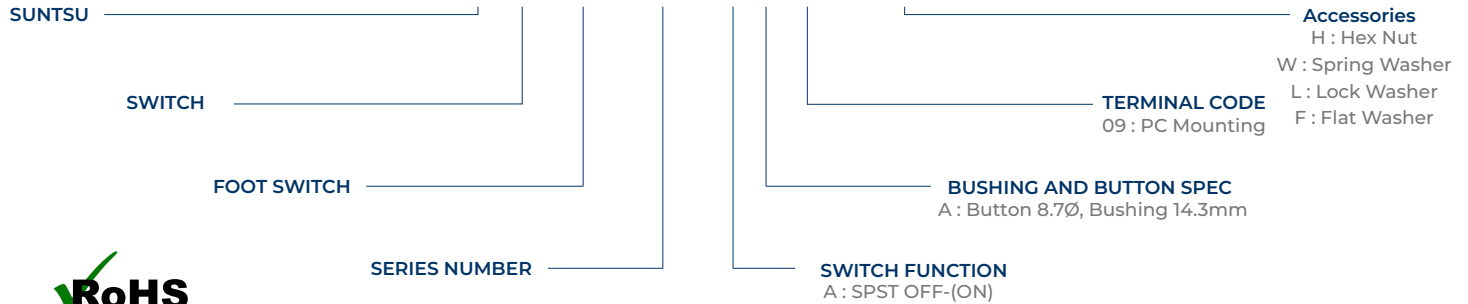
Features
<ul style="list-style-type: none"> Robustly constructed Nickel plated solid brass actuator Electrical life 20,000 cycles Mechanical life 100,000 cycles

Applications
<ul style="list-style-type: none"> Audio products Industry Medical



Part Numbering Guide

S SW FS - S01 - A A 09 - HWH

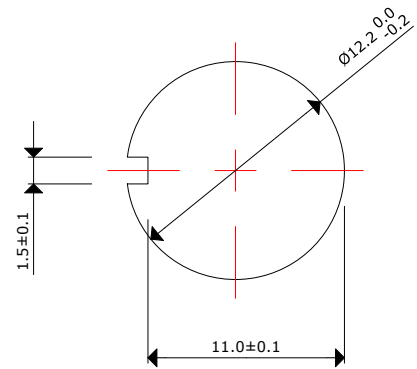
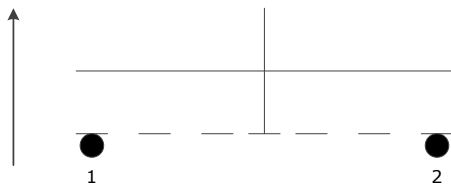


Cage Code: 4GUT4

Electrical and Material Parameters

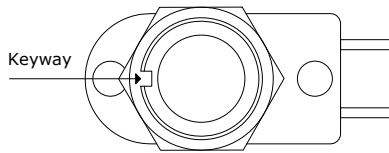
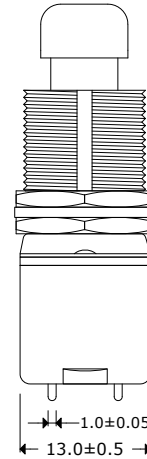
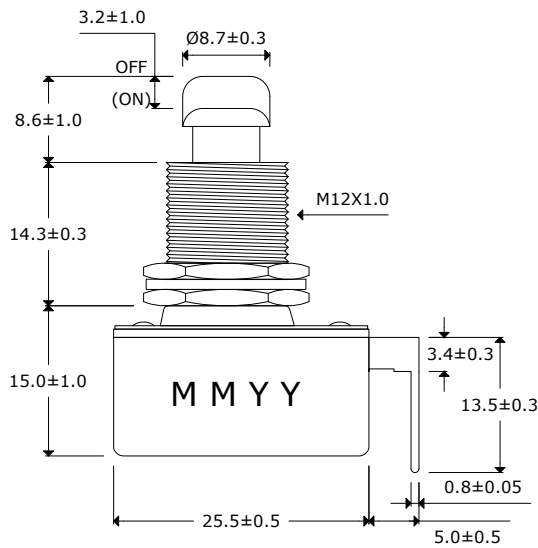
Rating	6A 125V AC, 3A 250VAC
Contact Resistance	50mΩ Max
Insulation Resistance	DC 500V 100MΩ Min.
Dielectric Strength	AC 1500V 1 minute
Operation Temperature	-20°C ~ 65°C
Switch Function	2P SPST OFF-(ON), PUSH ON
Accessories	2 HEX Nut & 1 SPRING Washer Assembly
Frame	Black, PF
Materials Actuator	Ni-plated, Brass
Terminals	Silver plated, Copper Alloy

Test Circuit & Mounting Hole

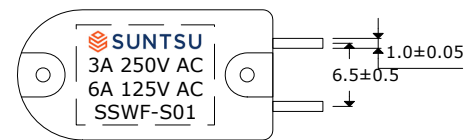


Outline Drawing

All dimensions are in millimeters (mm) unless otherwise noted. Drawings are not to scale.



Top View



Bottom View

Remarks:

1. 500pcs per 1 master carton
2. Electrical life 20,000 cycles
3. Mechanical life 100,000 cycles
4. Soldering ability of terminal:
 - a. Be soldered in 3 seconds.
 - b. Be soldered in 360±20°C