

S CN BN - J 2 1 50 - SO RPM

SUNTSU

CONNECTOR

BNC

Connector Type
Jack

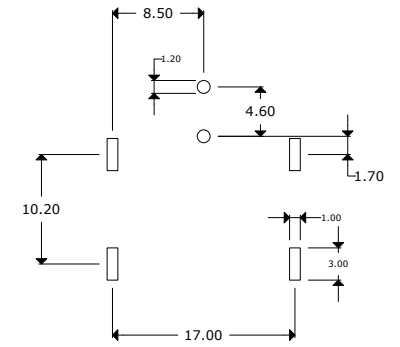
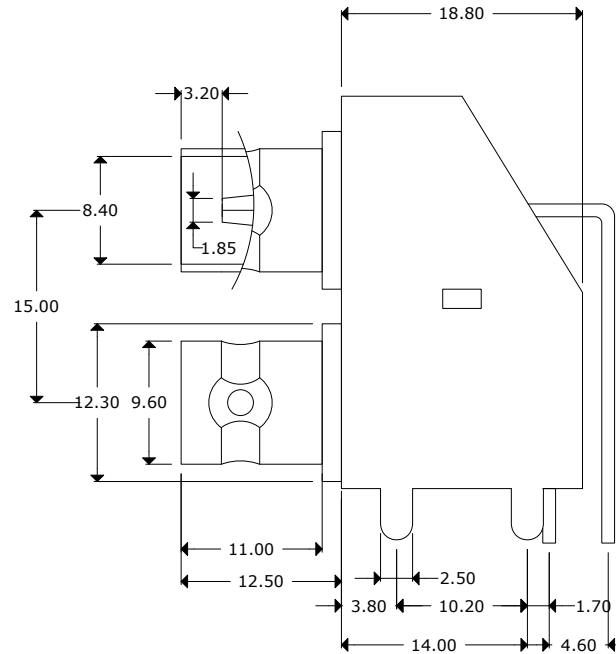
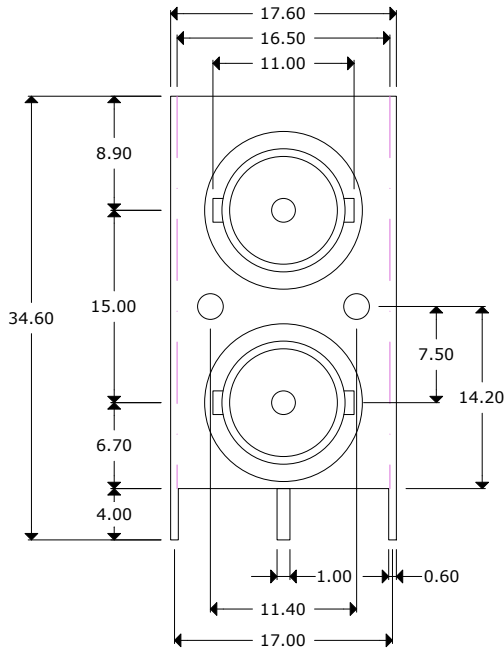
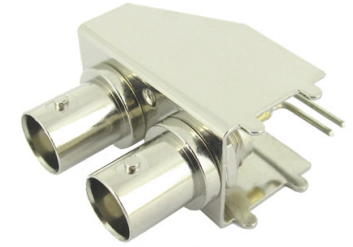
Rows
2

Connectors
per Row
1

Impedance
50

Contact Termination
Solder

Mounting Style
Right Angle PCB
Mount



**Recommended
Mounting
Layout**

1. Materials:
 - a) Body: Zinc Nickel Plated
 - b) Contact: Brass Nickel Plated
2. Impedance: 50Ω
3. Frequency Range: 0-3 GHz
4. VSWR: 1.5 Max
5. Working Voltage: 250V rms @ sea level
7. Insulation Resistance: 5000Ω/Min
8. Temperature Range: -40°C to 110°C



**TWO BNC FEMALE PCB MOUNT
90°**

Document History				Part No.	Drawn
Edits Made	Date	Edited By	Approved By	SCNBN-J2150-SORPM	B. Gibbons 10/30/2025
Initial Release	03/23/2022	B. Gibbons	KH Mun	Scale	Tolerance
Updated 2D Drawing and Specifications	10/30/2025	B. Gibbons	KH Mun	Not drawn to scale	0.5-15 = ±0.15 15-30 = ±0.30 30-120 = ±0.60 >120 = ±1.00
				Unit	Pages
				mm	1/1