

# S CN BN - J 1 1 75 - SO RBP

SUNTSU

CONNECTOR

BNC

Connector Type  
Jack

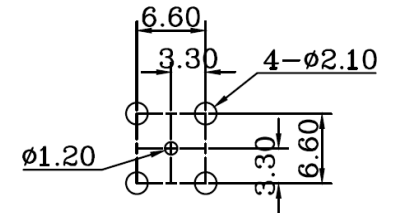
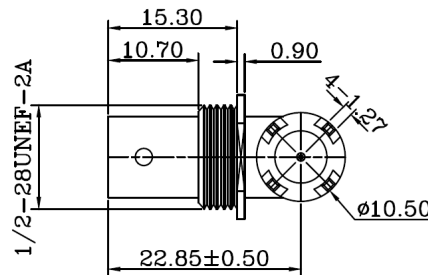
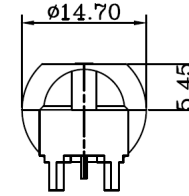
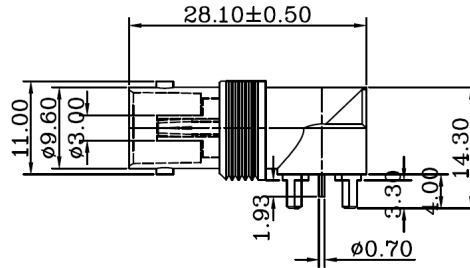
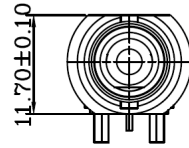
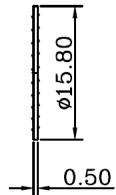
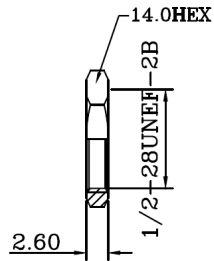
Rows

Connectors  
per Row

Impedance  
75

Contact Termination  
Solder

Mounting Style  
Right Angle  
Bulkhead PCB  
Mount



**Recommended  
Mounting  
Layout**

**1. Materials:**

- a) Body: Zinc Tin Plated
  - b) Contact: Brass Tin Plated
  - c) Insulator: Teflon Natural
2. Normal Impedence: 75Ω  
 3. Frequency Range: 0-1 GHz  
 4. Max Peak Voltage: 500V  
 5. Dielectric Strength: 1500V RMS  
 6. Insulation Resistance: 5000MΩ/Min



**BNC FEMALE RIGHT ANGLE  
PCB MOUNT**

Document History				Part No.	Drawn
Edits Made	Date	Edited By	Approved By	SCNBN-J1175-SORBP	B. Gibbons 06/28/2021
Initial Release	06/28/2021	B. Gibbons	KH Mun	Scale	Tolerance
				Not drawn to scale	0.5-15 = ±0.15 15-30 = ±0.30 30-120 = ±0.60 >120 = ±1.00
				Unit	Pages
				mm	1/1