

SCNRF - 6AAN - P1FS

SUNTSU

CONNECTOR

RF

MAXIMUM FREQUENCY
6 GHz

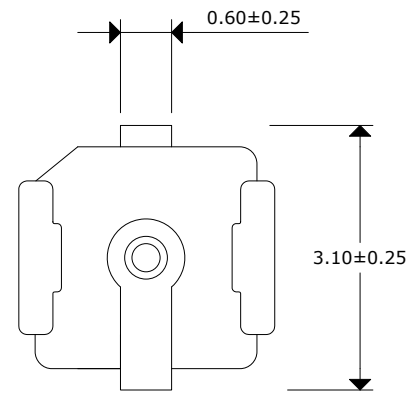
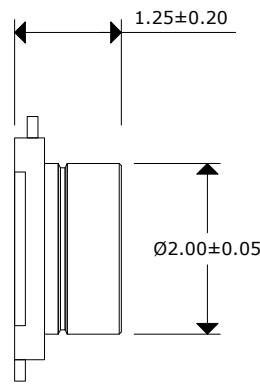
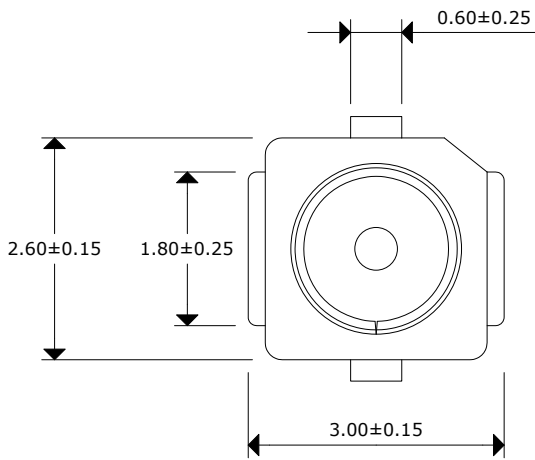
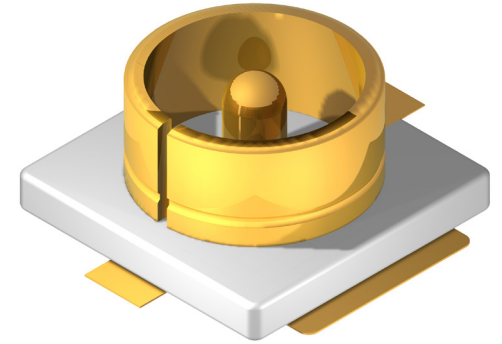
IMPEDANCE
50Ω

MOUNT TYPE
Panel

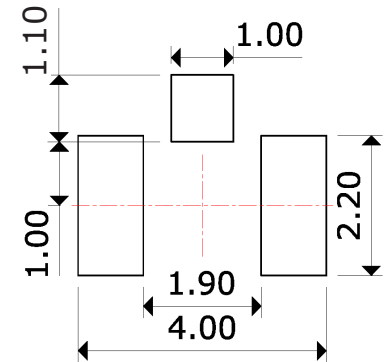
CONNECTOR TYPE
I-PEX

GENDER
Female

ORIENTATION
Straight



Recommended
Mounting
Layout



Impedance: 50Ω
 Frequency Range: 0GHz - 6GHz
 Voltage Standing Wave Ratio (VSWR): 1.5 MAX
 Working Voltage: 200 Vrms MAX
 Dielectric Withstanding Voltage: 200 Vrms MIN
 Operating Temperature: -40°C to 90°C
 Center Contact Resistance: 20 mΩ MAX
 Outer Contact Resistance: 10 mΩ MAX
 Insulation Resistance: 500 mΩ MIN



IPEX PANEL MOUNT FEMALE
STRAIGHT CONNECTOR

Document History			
Edits Made	Date	Edited By	Approved By
Initial Release	02/02/2021	B. Gibbons	KH Mun
Updated 2D Drawing to better match product	10/13/2021	B. Gibbons	KH Mun

Part No.	SCNRF-6AAN-P1FS	Drawn	B. Gibbons 02/02/2021
Scale	Not drawn to scale	Tolerance	
Unit	mm	Pages	1/1