

S CN RF - 6A A P - MX F R

SUNTSU

CONNECTOR

RF

MAXIMUM FREQUENCY
6 GHz

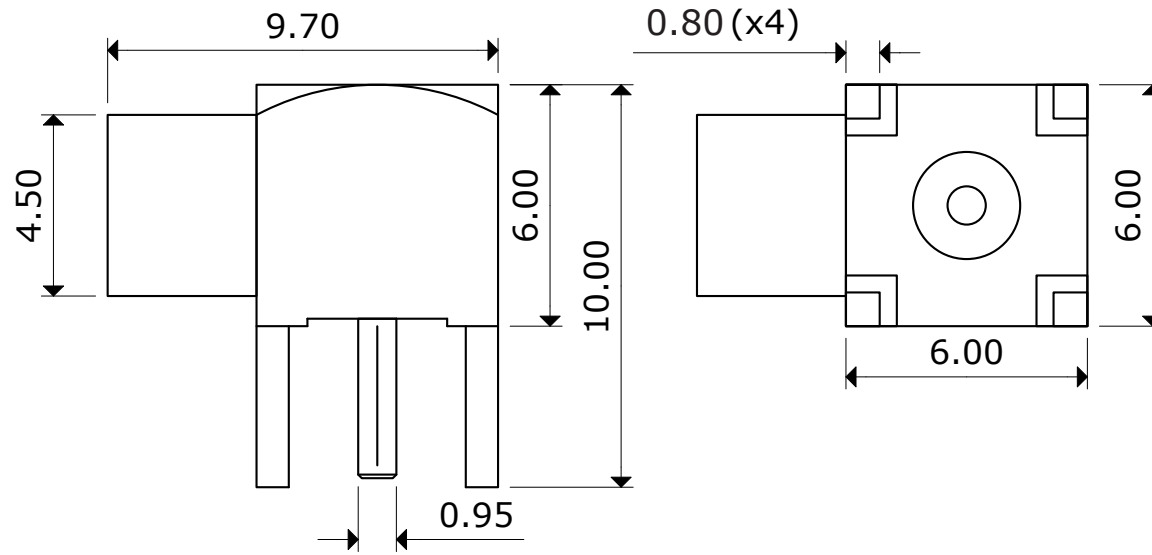
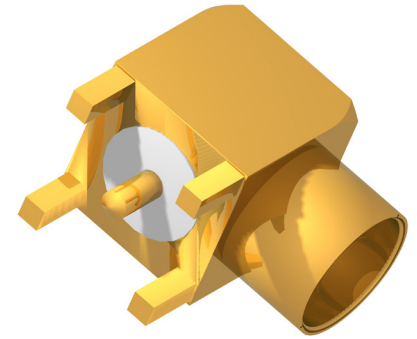
IMPEDANCE
50Ω

MOUNT TYPE
PCB
Through Hole

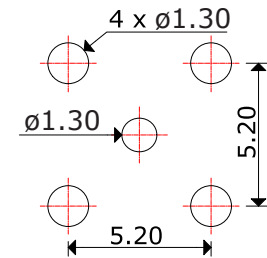
CONNECTOR TYPE
MCX

GENDER
Female

ORIENTATION
Right Angle



**Recommended
Mounting
Layout**



Impedance: 50Ω

Frequency Range: 0GHz - 6GHz

Voltage Standing Wave Ratio (VSWR): 1.7 MAX

Working Voltage: 170 Vrms MAX

Dielectric Withstanding Voltage: 500 Vrms MAX

Operating Temperature: -55°C to 155°C

Storage Temperature: -60°C to 165°C

Center Contact Resistance: 5 mΩ MAX

Outer Contact Resistance: 2.5 mΩ MAX

Insulation Resistance: 1000 mΩ MIN



**MCX PCB MOUNT FEMALE
RIGHT ANGLE CONNECTOR**

Document History

Edits Made	Date	Edited By	Approved By
Initial Release	02/02/2021	B. Gibbons	KH Mun

Part No.	SCNRF-6AAP-MXFR
Scale	Not drawn to scale
Unit	mm

Drawn	B. Gibbons	02/02/2021
Tolerance		
Pages		