

S CN RF - 6A A P - MX F S

SUNTSU

CONNECTOR

RF

MAXIMUM FREQUENCY
6 GHz

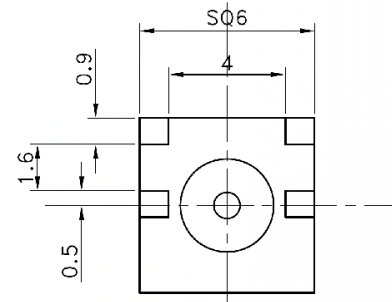
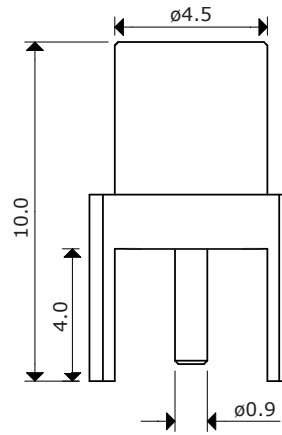
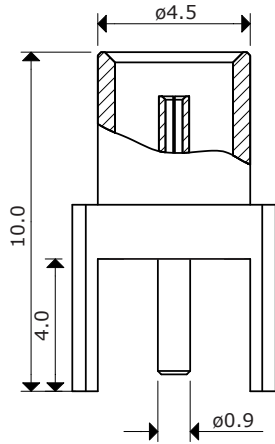
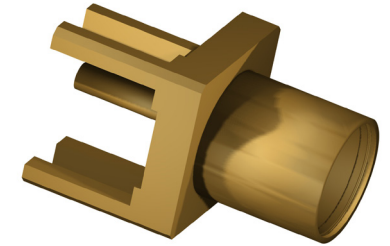
IMPEDANCE
50Ω

MOUNT TYPE
PCB
Through Hole

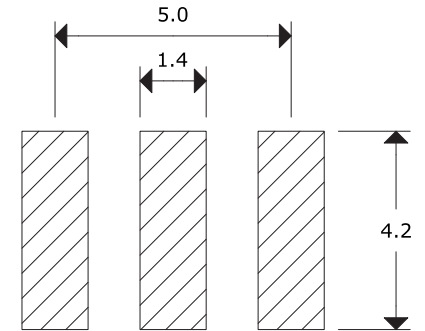
CONNECTOR TYPE
MCX

GENDER
Female

ORIENTATION
Straight



Recommended Mounting Layout



Impedance: 50Ω
 Frequency Range: 0GHz - 6GHz
 Voltage Standing Wave Ratio (VSWR): 1.7 MAX
 Working Voltage: 170 Vrms MAX
 Dielectric Withstanding Voltage: 500 Vrms MAX
 Operating Temperature: -55°C to 155°C
 Storage Temperature: -60°C to 165°C
 Center Contact Resistance: 5 mΩ MAX
 Outer Contact Resistance: 2.5 mΩ MAX
 Insulation Resistance: 1000 mΩ MIN



MCX PCB MOUNT FEMALE
STRAIGHT CONNECTOR

Document History			
Edits Made	Date	Edited By	Approved By
Initial Release	02/02/2021	B. Gibbons	KH Mun

Part No.	SCNRF-6AAP-MXFS	Drawn	B. Gibbons
Scale	Not drawn to scale	Tolerance	02/02/2021
Unit	mm	Pages	1/1