

# S CN RF - 6A A P - RA F R

SUNTSU

CONNECTOR

RF

MAXIMUM FREQUENCY  
6 GHz

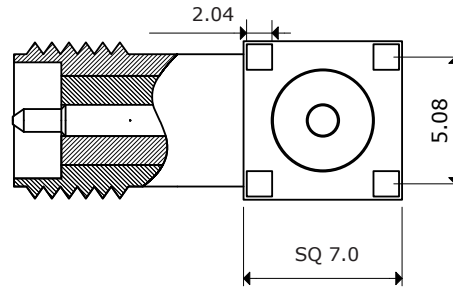
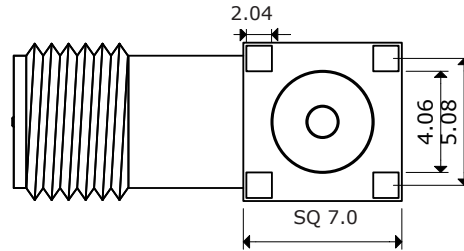
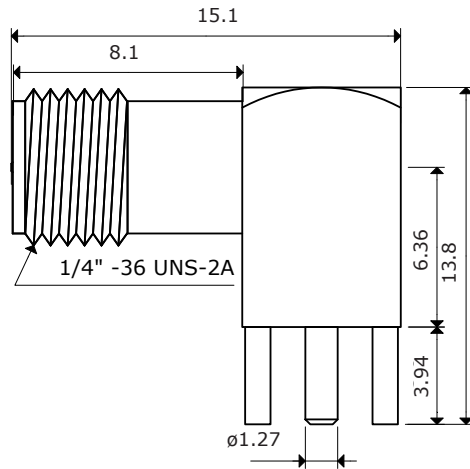
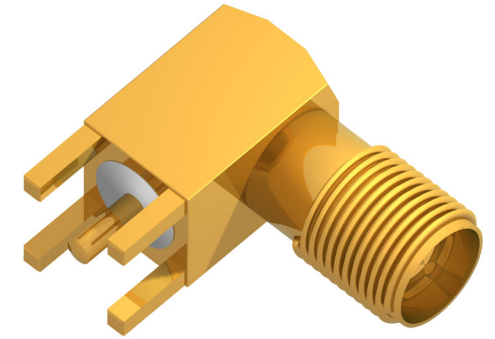
IMPEDANCE  
50Ω

MOUNT TYPE  
PCB  
Through Hole

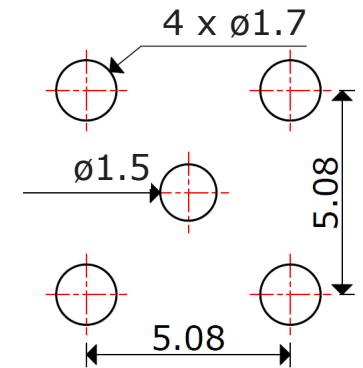
CONNECTOR TYPE  
RP-SMA

GENDER  
Female

ORIENTATION  
Right Angle



Recommended  
Mounting  
Layout



Impedance: 50Ω  
 Frequency Range: 0GHz - 6GHz  
 Voltage Standing Wave Ratio (VSWR): 1.5 MAX  
 Working Voltage: 335 Vrms MAX  
 Dielectric Withstanding Voltage: 1000 Vrms MIN  
 Operating Temperature: -55°C to 85°C  
 Storage Temperature: -60°C to 165°C  
 Center Contact Resistance: 6 mΩ MAX  
 Outer Contact Resistance: 2 mΩ MAX  
 Insulation Resistance: 1000 mΩ MIN



RP-SMA PCB MOUNT FEMALE  
RIGHT ANGLE CONNECTOR

Document History			
Edits Made	Date	Edited By	Approved By
Initial Release	02/02/2021	B. Gibbons	KH Mun

Part No.	SCNRF-6AAP-RAFR	Drawn	B. Gibbons 02/02/2021
Scale	Not drawn to scale	Tolerance	
Unit	mm	Pages	1/1