

S SW FS - S01 - A E 05 - HWH

SUNTSU

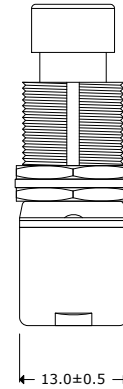
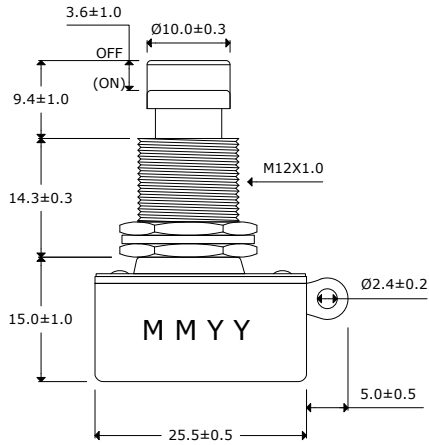
FOOT SWITCH

SWITCH FUNCTION
A : SPST OFF-(ON)

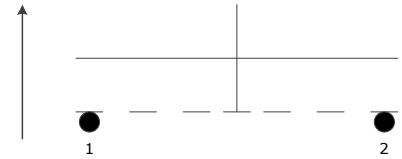
TERMINAL CODE
05 : Solder Type

BUSHING AND BUTTON SPEC
E : Button 10.0Ø, Bushing 14.3mm

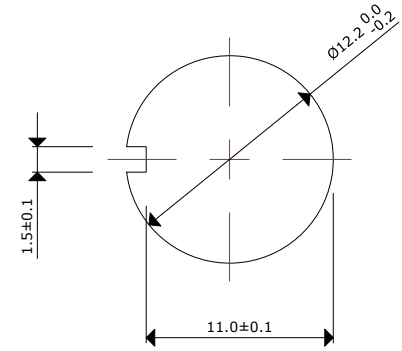
ACCESSORIES
H : Hex Nut
W : Spring Washer



Test Circuit



Mounting Hole



Soldering Ability:

Be soldered in 3 seconds
Be soldered in 360±20°C

Electrical Parameters:

Rating: 6A 125V AC, 3A 250VAC
Contact Resistance: 50mΩ Max

Insulation Resistance: DC 500V 100MΩ Min.

Dielectric Strength: AC 1500V 1 minute

Operation Temperature: -20°C ~ 65°C

Switch Function: 2P SPST OFF-(ON), PUSH ON

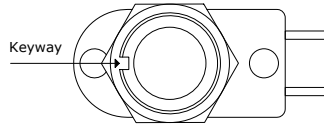
Accessories: 2 HEX Nut & 1 SPRING Washer Assembly

Materials:

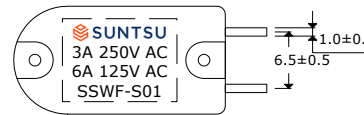
Frame: Black, PF

Actuator: Ni-plated, Brass

Terminals: Silver plated, Copper Alloy



Top View



Bottom View

Remarks:

- 500pcs per master carton
- Electrical life 20,000 cycles
- Mechanical life 100,000 cycles



Momentary Foot Switch

Document History

Edits Made	Date	Edited By	Approved By
Initial Release	09/07/2021	B. Gibbons	KH Mun

Part No.	SSWFS-S01-AE05-HWH
Scale	Not drawn to scale
Unit	mm

Drawn	B. Gibbons	09/07/2021
Tolerance		
Pages		