

S SW FS - S01 - B A 05 - HH

SUNTSU

SWITCH

FOOT SWITCH

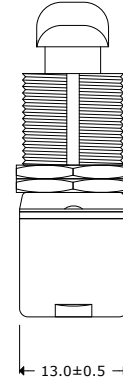
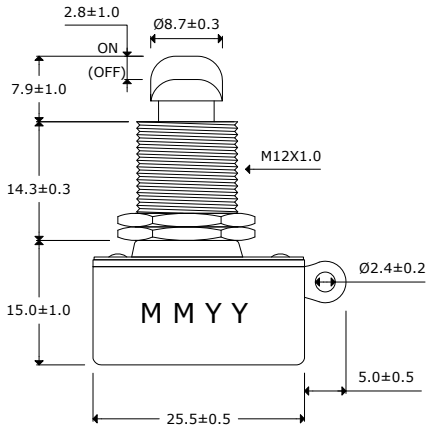
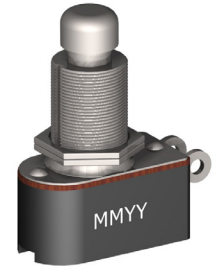
SERIES NUMBER

SWITCH FUNCTION
B : SPST ON-(OFF)

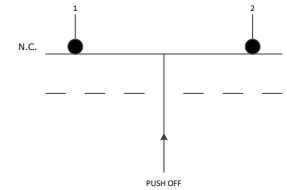
TERMINAL CODE
05 : Solder Type

BUSHING AND BUTTON SPEC
A : Button 8.7Ø, Bushing 14.3mm

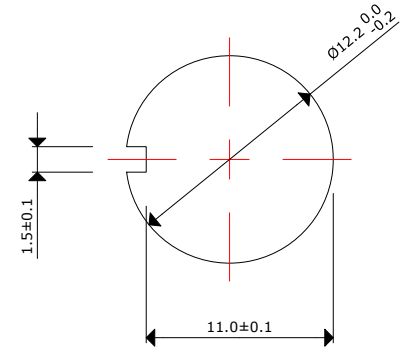
ACCESSORIES
H : Hex Nut



Test Circuit



Mounting Hole



Soldering Ability:

Be soldered in 3 seconds
Be soldered in 360±20°C

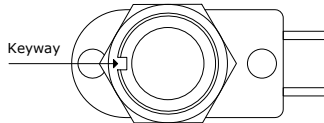
Electrical Parameters:

Rating: 6A 125V AC, 3A 250VAC
Contact Resistance: 50mΩ Max
Insulation Resistance: DC 500V 100MΩ Min.
Dielectric Strength: AC 1500V 1 minute
Operation Temperature: -20°C ~ 65°C
Switch Function: 2P SPST ON-(OFF), PUSH OFF

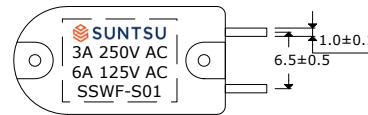
Accessories: 2 HEX Nut Assembly

Materials:

Frame: Black, PF
Actuator: Ni-plated, Brass
Terminals: Silver plated, Copper Alloy



Top View



Bottom View

Remarks:

- 500pcs per master carton
- Electrical life 20,000 cycles
- Mechanical life 100,000 cycles



Momentary Foot Switch

Document History			
Edits Made	Date	Edited By	Approved By
Initial Release	09/07/2021	B. Gibbons	KH Mun

Part No.	SSWFS-S01-BA05-HH	Drawn	B. Gibbons
Scale	Not drawn to scale	Tolerance	09/07/2021
Unit	mm	Pages	1/1